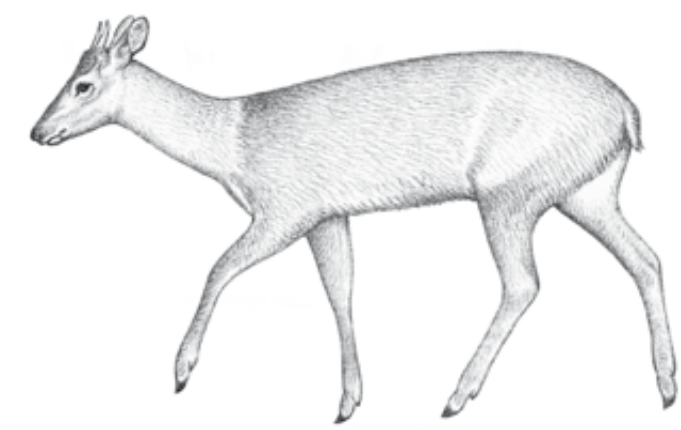
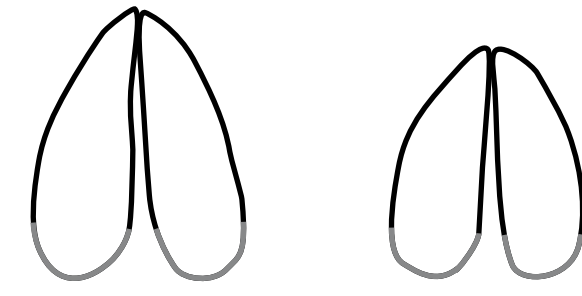


MAMÍFEROS DE LA RESERVA DE BIÓSFERA DE LAS YUNGAS



Mazama americana
CORZUELA



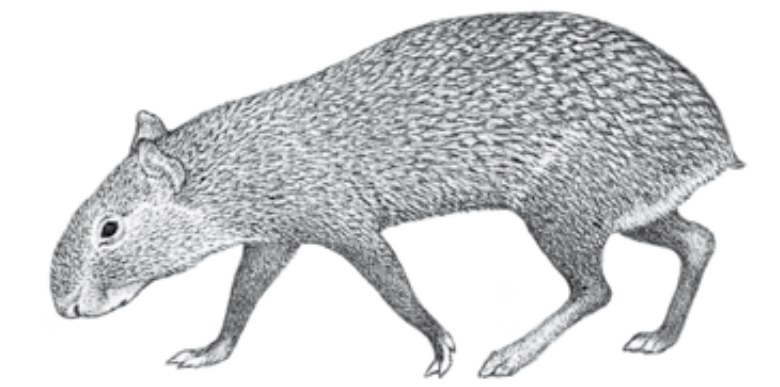
PATA DELANTERA PATA TRASERA



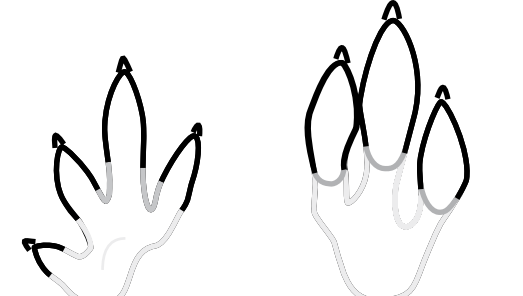
Sciurus ignitus
ARDILLA



PATA DELANTERA PATA TRASERA



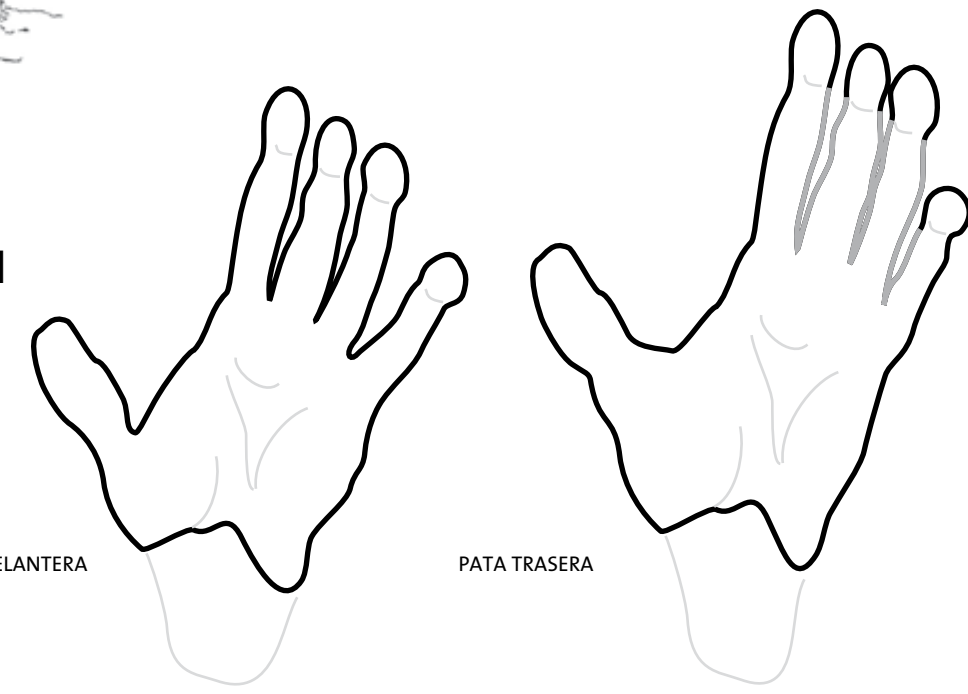
Dasyprocta azarae
ACUTE // AGUTÍ



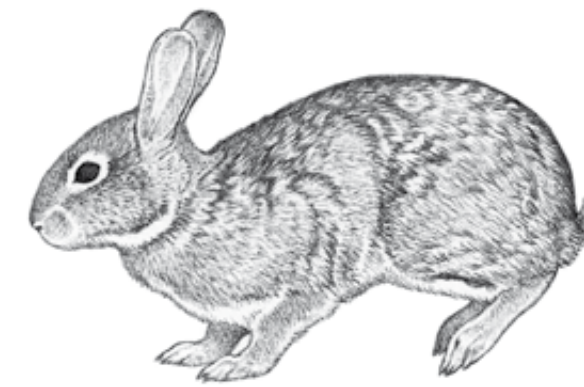
PATA DELANTERA PATA TRASERA



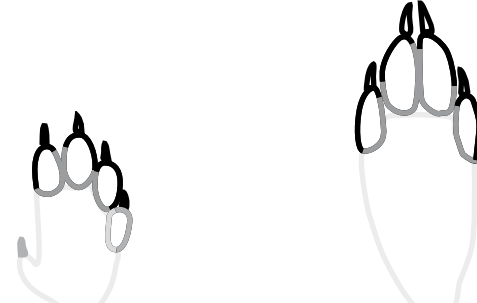
Cebus apella
MONO CAÍ // MARTÍN



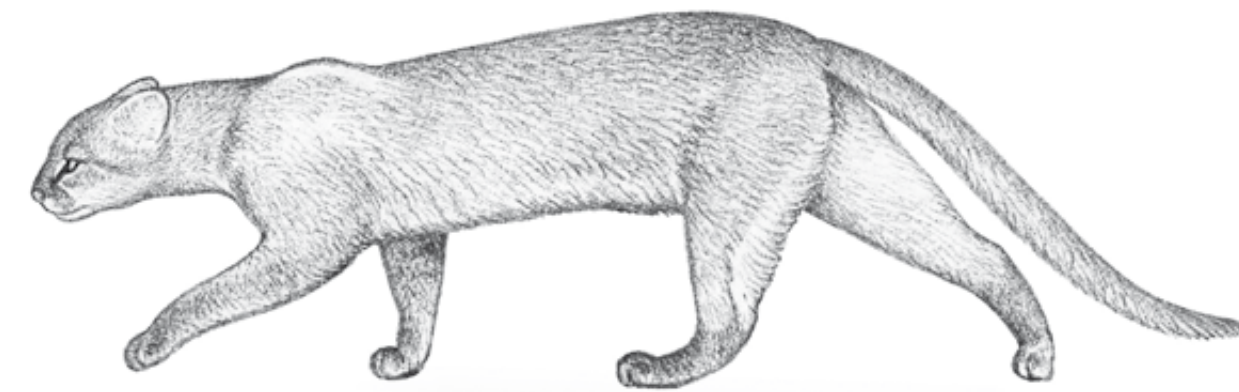
PATA DELANTERA PATA TRASERA



Sylvilagus brasiliensis
TAPETÍ



PATA DELANTERA PATA TRASERA



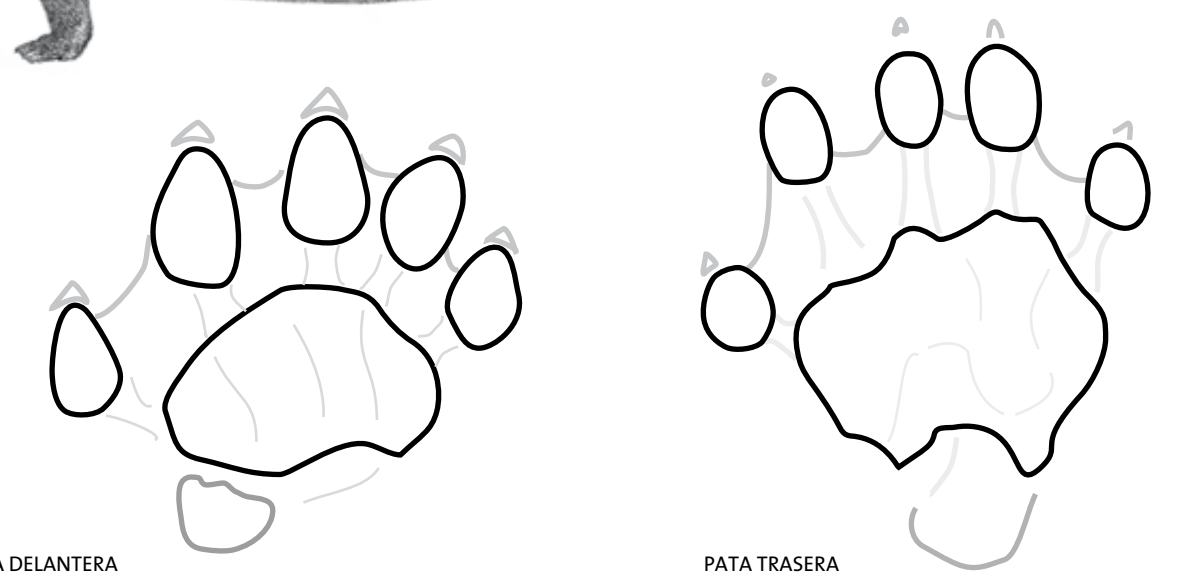
Puma yagouaroundi
YAGUARUNDÍ // GATO MORO



PATA DELANTERA PATA TRASERA



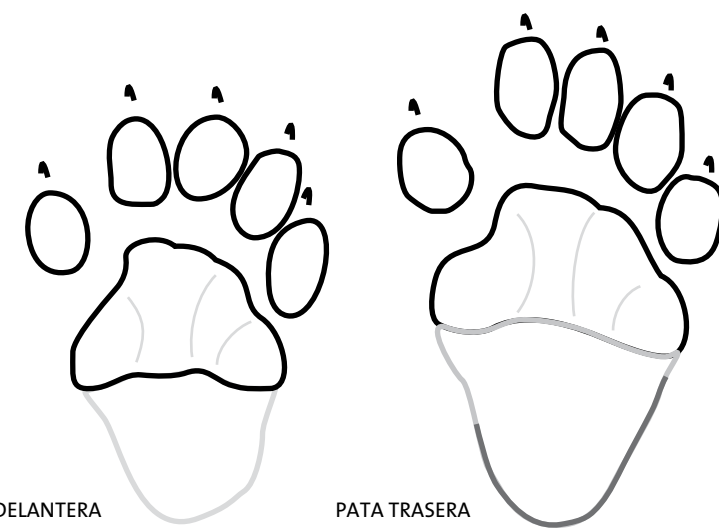
Lontra longicaudis
LOBITO DE RÍO



PATA DELANTERA PATA TRASERA



Eira barbara
PERRO DE MONTE // GATO EYRÁ



PATA DELANTERA PATA TRASERA



Nasua nasua
TEJÓN // COATÍ



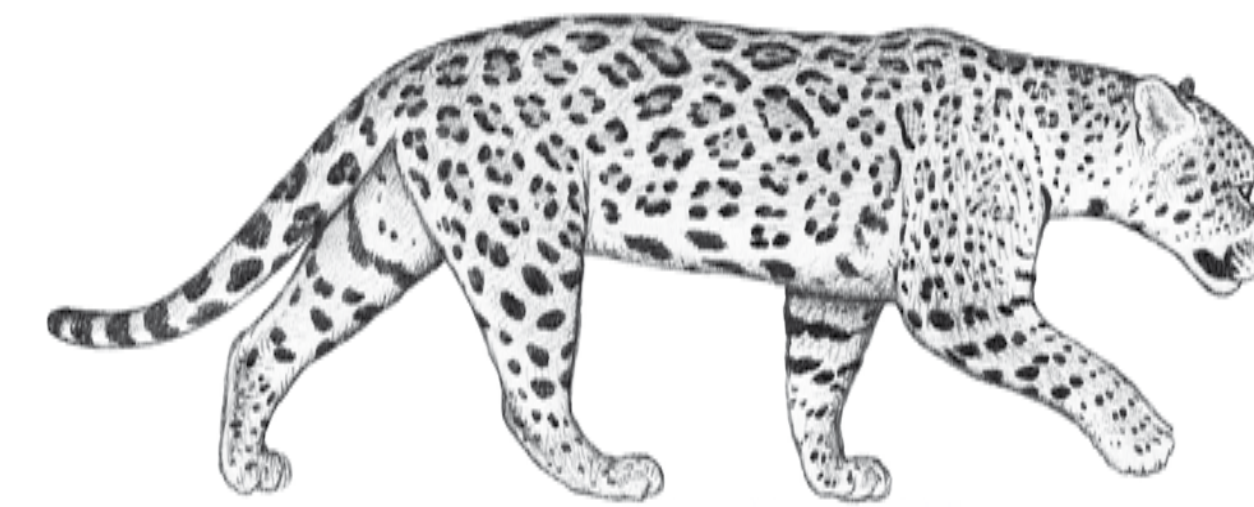
PATA DELANTERA PATA TRASERA



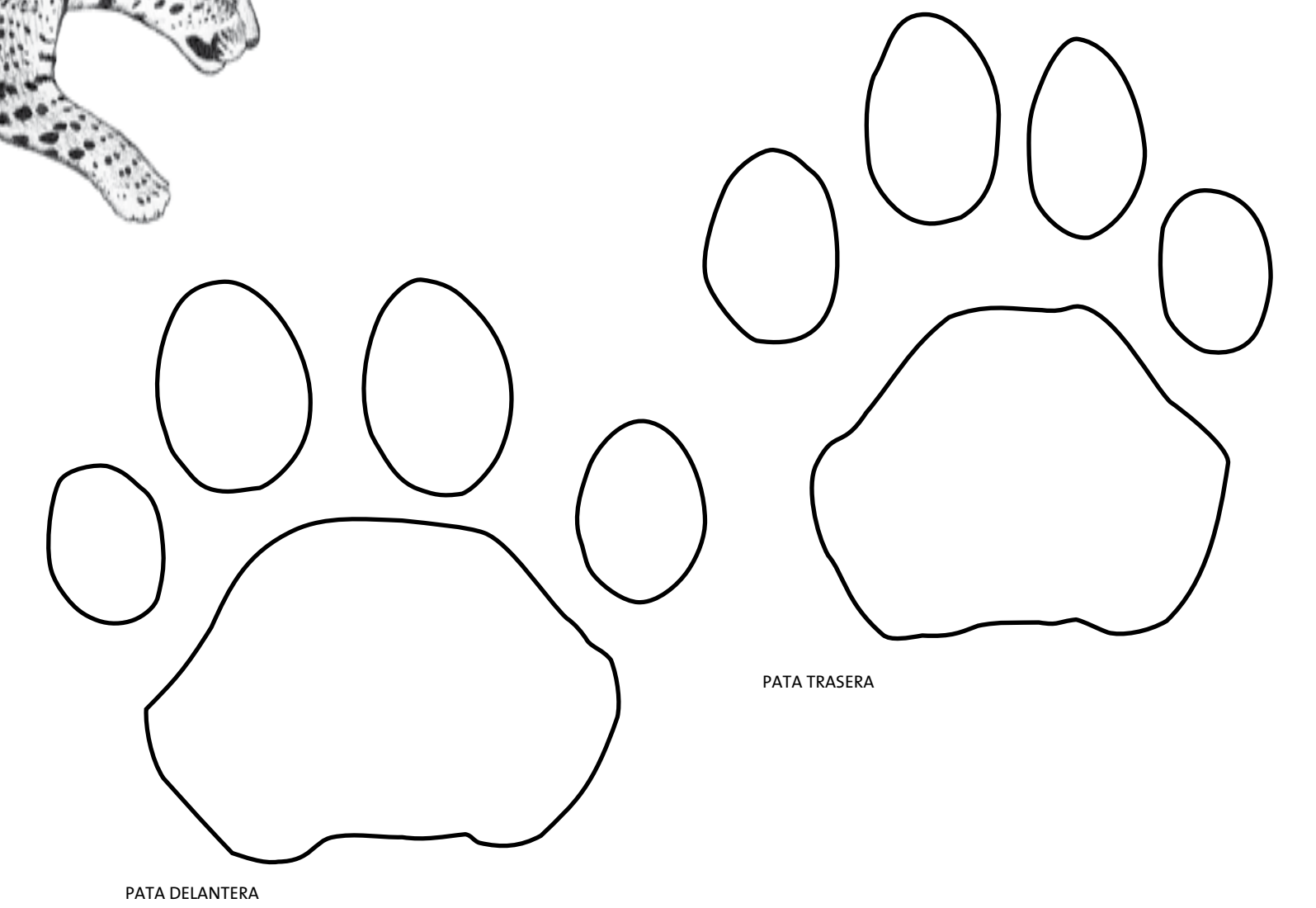
Procyon cancrivorus
MAYATO // AGUARÁ POPÉ



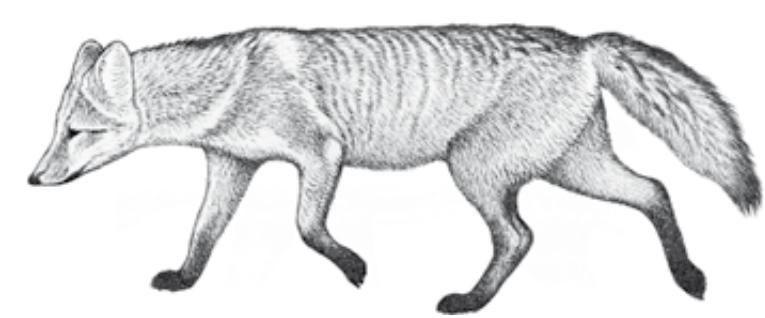
PATA DELANTERA PATA TRASERA



Panthera onca
TIGRE OVERO // YAGARETÉ



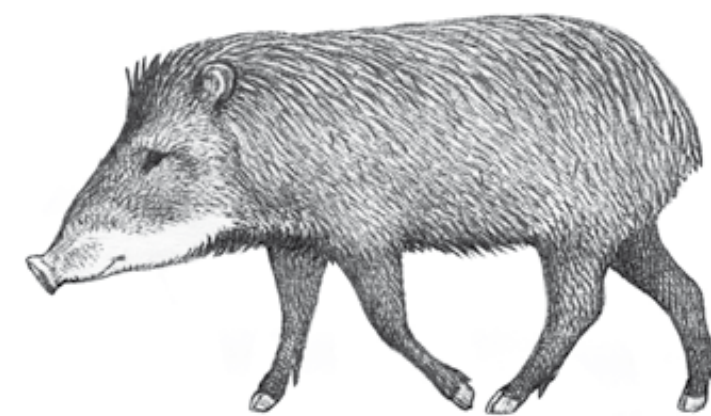
PATA DELANTERA



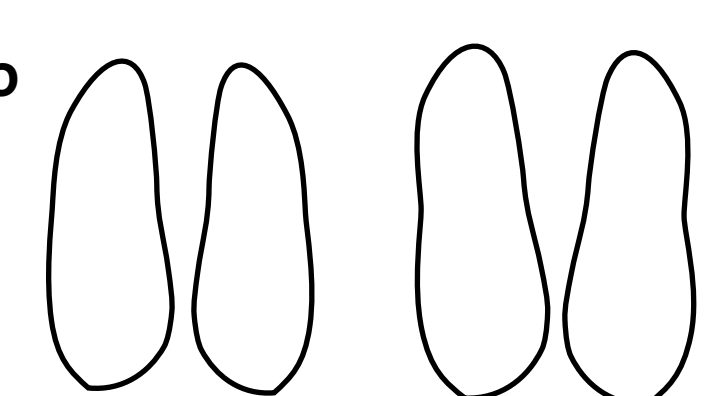
Cerdocyon thous
ZORRO DE MONTE



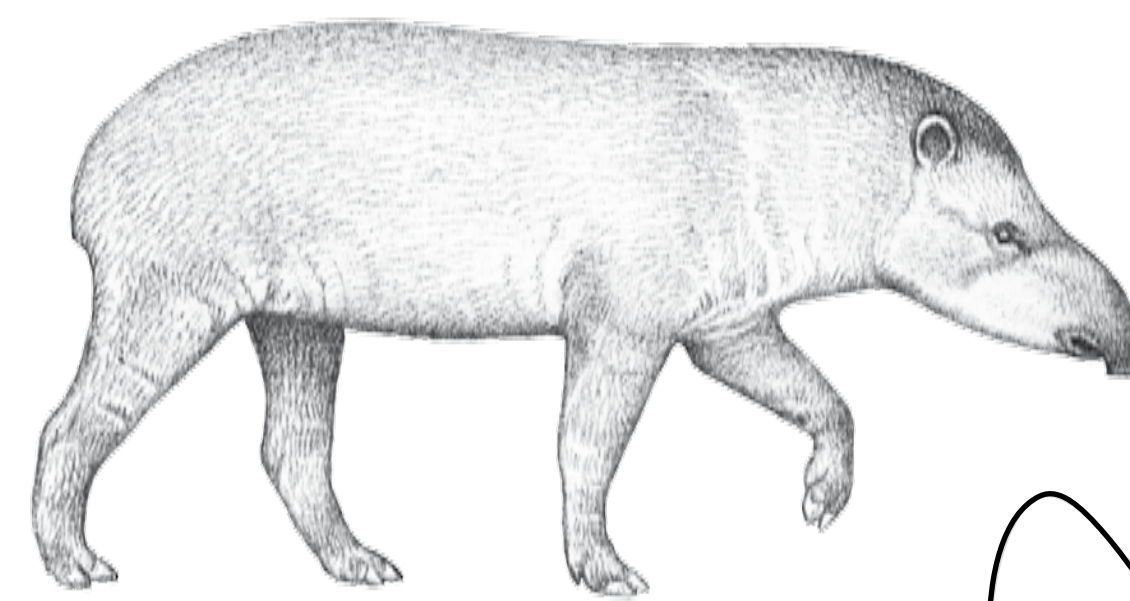
PATA TRASERA PATA DELANTERA



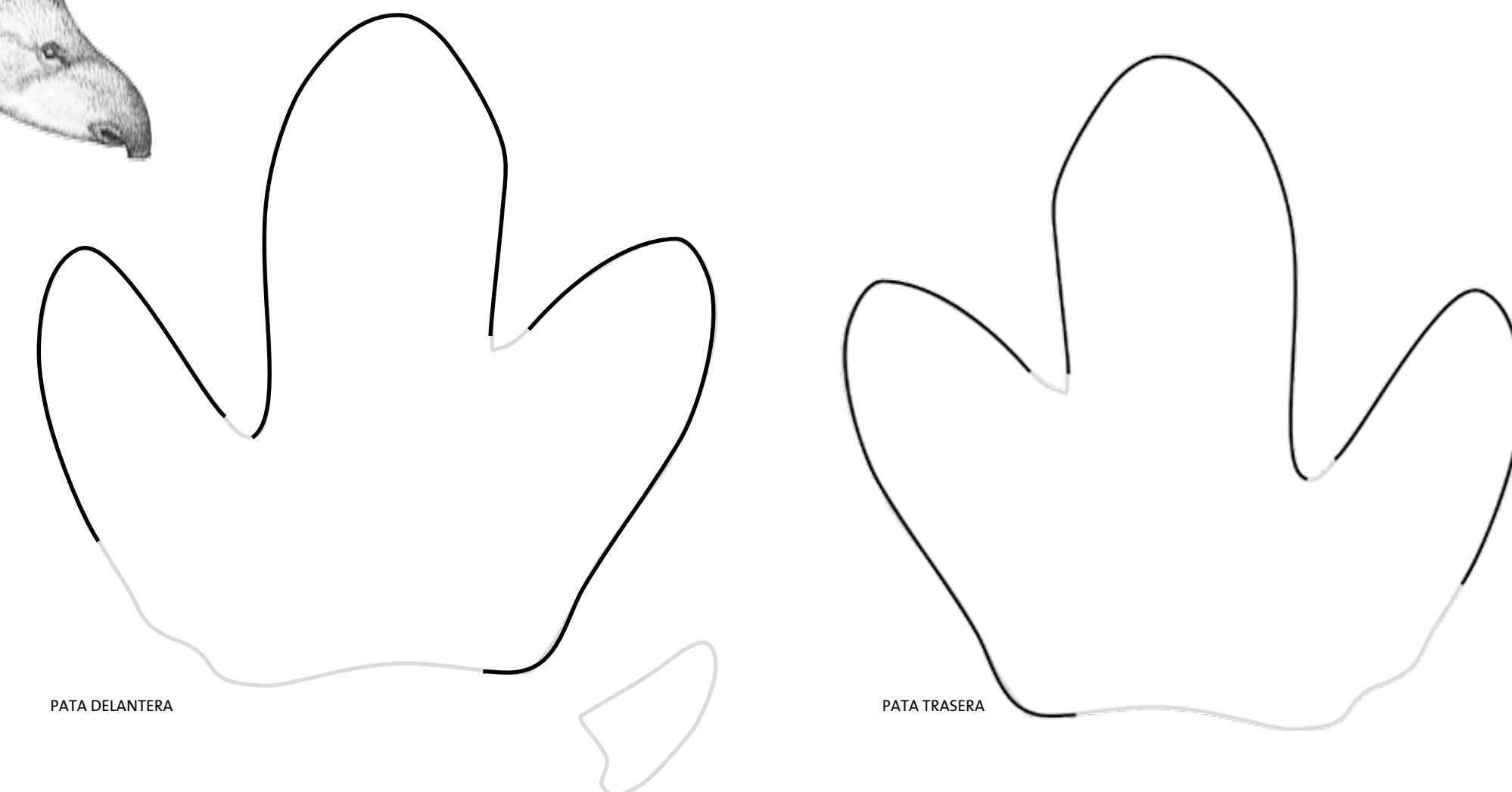
Tayassu pecari
ROSILLO // PECARÍ LABIADO



PATA TRASERA PATA DELANTERA



Tapirus terrestris
ANTA // TAPIR



PATA DELANTERA

Información extraída de: "Guía de Huellas de los Mamíferos de Misiones y otras áreas del subtropico de Argentina" de los autores: Carlos De Angelo // Agustín Paviolo // Yamil Di Blanco // Mario Di Bitetti. Dibujos de Aldo Chiappe.

Editado con el apoyo de:



Ediciones del Subtrópico

